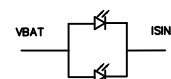


TP PIN ASSIGNMENT	
1	GND
2	RD
3	VDDA
4	IOVCC
5	CSX
6	D/CX
7	SDA
8	SCL
9	RESET
10	LEDON
11	LEDPWM
12	LEDA
13	LEDK
14	IMO
15	IM1
16	IM2
17	DBO
18	DB1
19	DB2
20	DB3
21	DB4
22	DB5
23	DB6
24	DB7
25	GND

- NOTE:
1. GENERAL TOLERANCE: ± 0.20 .
 2. (...) IS REFERENCE DIMENSION.
 3. * CRITICAL DIMENSION
 4. COMPLIABLY RoHS.



VF=3.2 \pm 0.2V, IF=40mA

Panel	Display Type	TFT, TRANSMISSIVE
	Viewing Angle	ALL
	Driver IC	ST7796S
LCM	Interface	/
	Operating Voltage	IOVCC=1.8V VCC=2.8V
	Luminance	TBD
	Center coordinate	TBD
	Backlight	/
	Connector type	FH26W-25S-0.3SHW(05)
	Operation Temp.	-20°C TO 70°C
	Storage Temp.	-30°C TO 80°C

					DRAWN	LH	TITLE	DRAWING NO.			
					ME.CHECKED		MODULE SPEC.	TF7381ADI012			
					EE.CHECKED			UNIT	mm	SCALE	FIT
					PE.CHECKED			3rd Angle		SHEET	1 OF 1
					APPROVED			TRUEVISION TECHNOLOGIES LTD			
01		新版发行		LH	2015.2.13	CUSTOMER'S APPROVAL					
VER.	SYMBOL	AMENDMENT		SIGN	DATE						