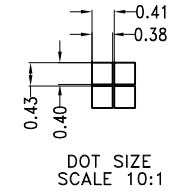
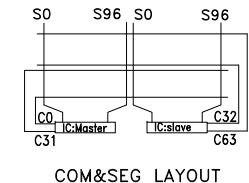
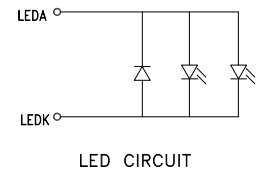
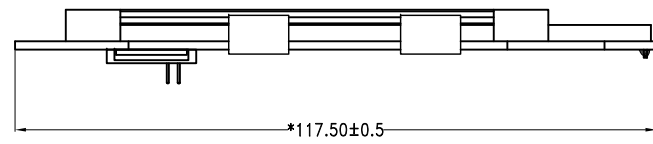


PIN DESCRIPTION

PIN	CON1
1	VDD
2	GND
3	SPI_SDA
4	SPI_SCL
5	/CS1
6	RS
7	PC-CLK
8	/CS2
9	LEDA
10	PC-SDA
11	KEYINT
12	LEDK
13	GND
14	RES

PIN	CON2
1	K1
2	K2
3	K3
4	K4
5	K5
6	K6
7	K7
8	K8
9	VDD
10	GND



- NOTE:
1. GENERAL TOLERANCE:  $\pm 0.3$
  2. (...) IS REFERENCE DIMENSION.
  3. \* CRITICAL DIMENSION
  4. COMPLYABLY RoHS.

Display Type	FSTN
	POSITIVE
	TRANSMISSIVE
Front Polarizer	
Operating Method	1/65 DUTY, 1/9 BIAS
Viewing Angle	6 O'CLOCK
LCD Driver IC	ST7565P
Operating Voltage	VDD=3.3V VLCD=10V
Operation Temperature	-10°C TO 50°C
Storage Temperature	-20°C TO 70°C
High Temperature/Humidity Storage	
Interface	
Backlight	WHITE (I=20mA, V=3.1V)

VER.	SYMBOL	AMENDMENT	SIGN	DATE	APPROVAL	TITLE	DRAWING NO.			
			CXM	08.08.29	DRAWN		STR-TG0798			
			CXM	08.08.21	ME.CHECKED					
			CXM	08.08.12	EE.CHECKED					
			CXM	08.08.07	PE.CHECKED					
			CXM	08.05.23	APPROVED					
01		first issue	CXM	08.05.21	CUSTOMER'S APPROVAL		UNIT	mm	SCALE	FIT
							3rd Angle		SHEET 1 OF 1	
						TRUEVISION TECHNOLOGIES LTD				