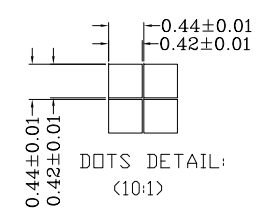
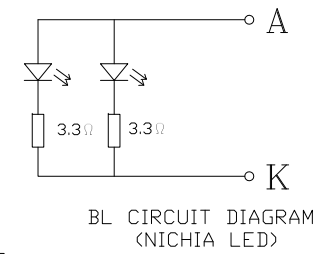
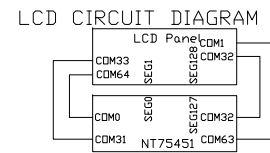
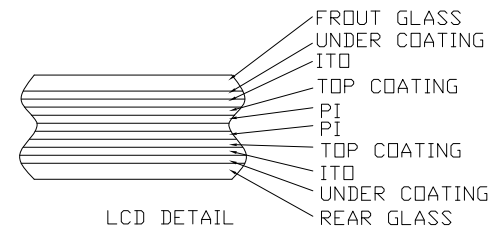
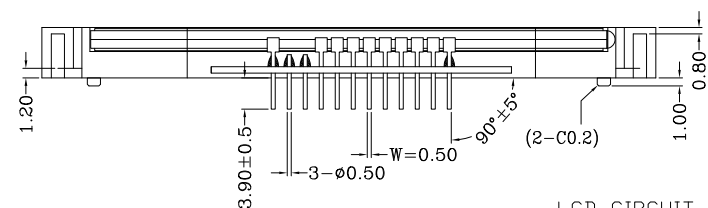
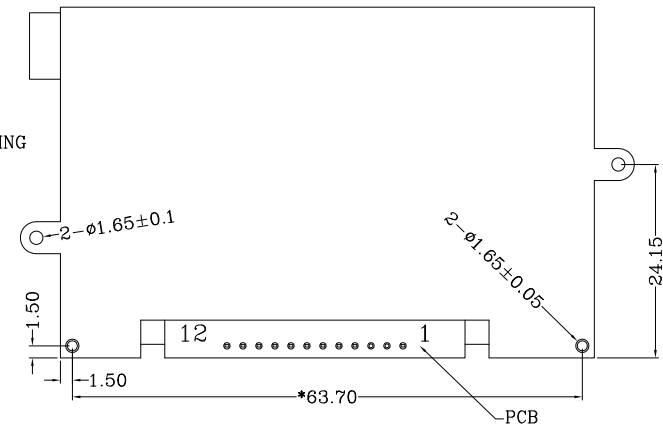


PIN ASSIGNMENT

NO.	SIGNAL
1	NC
2	A+
3	K-
4	V0
5	VSS
6	VDD
7	SI(D7)
8	SCL(D6)
9	AO
10	/RES
11	/CS
12	NC



NOTE:
 1. GENERAL TOLERANCE: ±0.2.
 2. (..) IS REFERENCE DIMENSION.
 3. COMPLYABLY ROHS.
 4. * CRITICAL DIMENSION.
 5. ACF for CDG of IC: CP6920F3(3um Filler)

Display Type	FFSIN(2 retarder in front pol)
	POSITIVE
	TRANSFLECTIVE
Operating Method	1/65 DUTY,1/7 BIAS
Viewing Angle	12 O'CLOCK
LCD Driver IC	NT75451(NOVATEK)
Operating Voltage	VLCD=6.9±0.2V
Operation Temperature	-10°C TO 60°C
Storage Temperature	-20°C TO 70°C
Interface	SERIAL-4SPI
Backlight Color	2PCS WHITE LED(10mA, 2.8±0.3 V)

VER.	SYMBOL	AMENDMENT	SIGN	DATE	DRAWN	YB	TITLE	DRAWING NO.	UNIT	mm	SCALE	FIT
01		First Issue	LJW	12.11.05	EE.CHECKED	FJ	MODULE SPEC.	STR-TG9045	3rd Angle	⊕		
					PE.CHECKED	FJ		CUSTOMER NUMBER:				
					APPROVED	XH	BOM No:BM110704-03					
					CUSTOMER'S APPROVAL							
								TRUEVISION TECHNOLOGIES LTD				