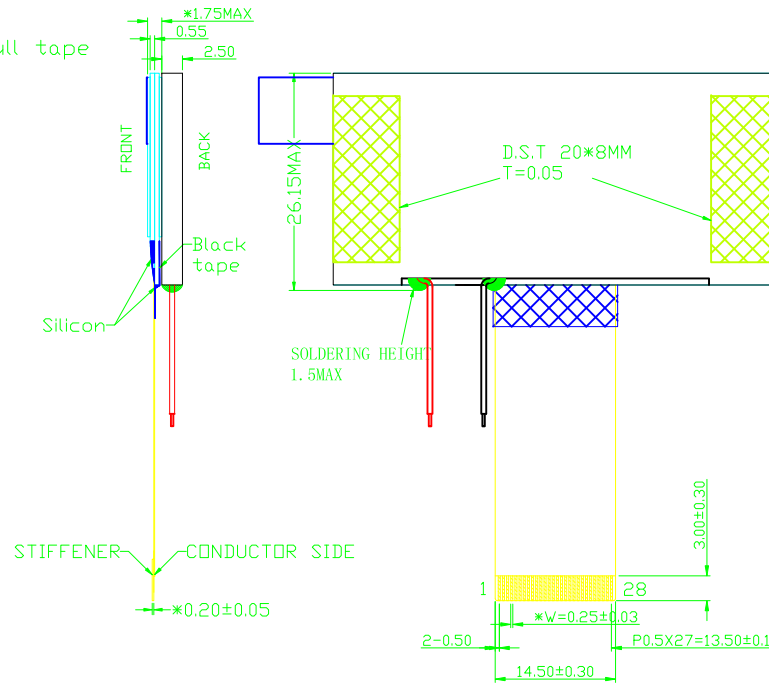


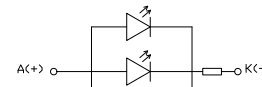
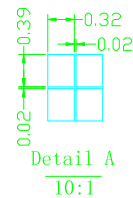
Note: Green area is 128\*32 DOTS operable area, red area is inoperable area.



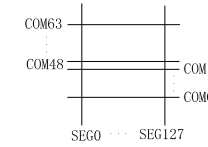
PIN ASSIGNMENT

No	Symbol	No	Symbol
1	/CS	15	NC
2	/RST	16	NC
3	A0	17	NC
4	/WR	18	NC
5	/RD	19	NC
6	D0	20	NC
7	D1	21	NC
8	D2	22	NC
9	D3	23	NC
10	D4	24	NC
11	D5	25	V0
12	D6	26	C86
13	D7	27	P/S
14	VSS	28	VDD

- NOTE:
1. GENERAL TOLERANCE: ±0.20.
  2. (...) IS REFERENCE DIMENSION.
  3. \* CRITICAL DIMENSION
  4. RoHS COMPLIANT



BACKLIGHT CIRCUIT DIAGRAM(White)



COM & SEG LAYOUT

Display Type	FSTN POSITIVE TRANSFLECTIVE
Front Polarizer	
Operating Method	1/33 DUTY,1/6 BIAS
Viewing Angle	6 O'CLOCK
LCD Driver IC	IST3080CA1
Operating Voltage	Vop=7.6V
Driver Voltage	VDD=3.0V
Operation Temperature	-10°C TO 60°C
Storage Temperature	-20°C TO 70°C
Interface	—
Backlight	W Vf=3.3V,If=45mA TYPE

VER.	SYMBOL	AMENDMENT	SIGN	DATE	CUSTOMER'S APPROVAL	DRAWN LJW	EE.CHECKED TJP	ME.CHECKED TJP	APPROVED HJB	TITLE MODULE SPEC.	DRAWING NO. STR-TG9288A
						UNIT mm		SCALE	FIT	BOM NO.: BM140522-08A	
						3rd Angle		SHEET 1 OF 1		TRUEVISION TECHNOLOGIES LTD	