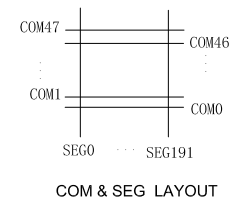
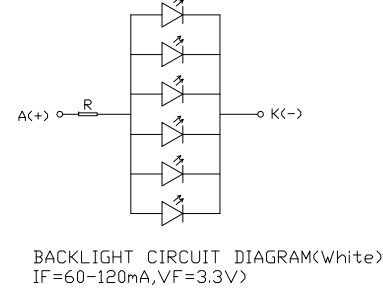
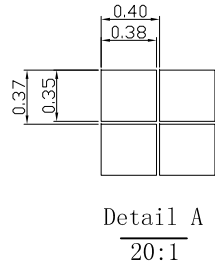
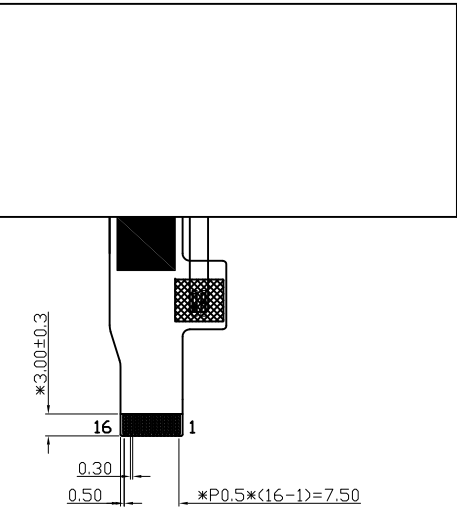
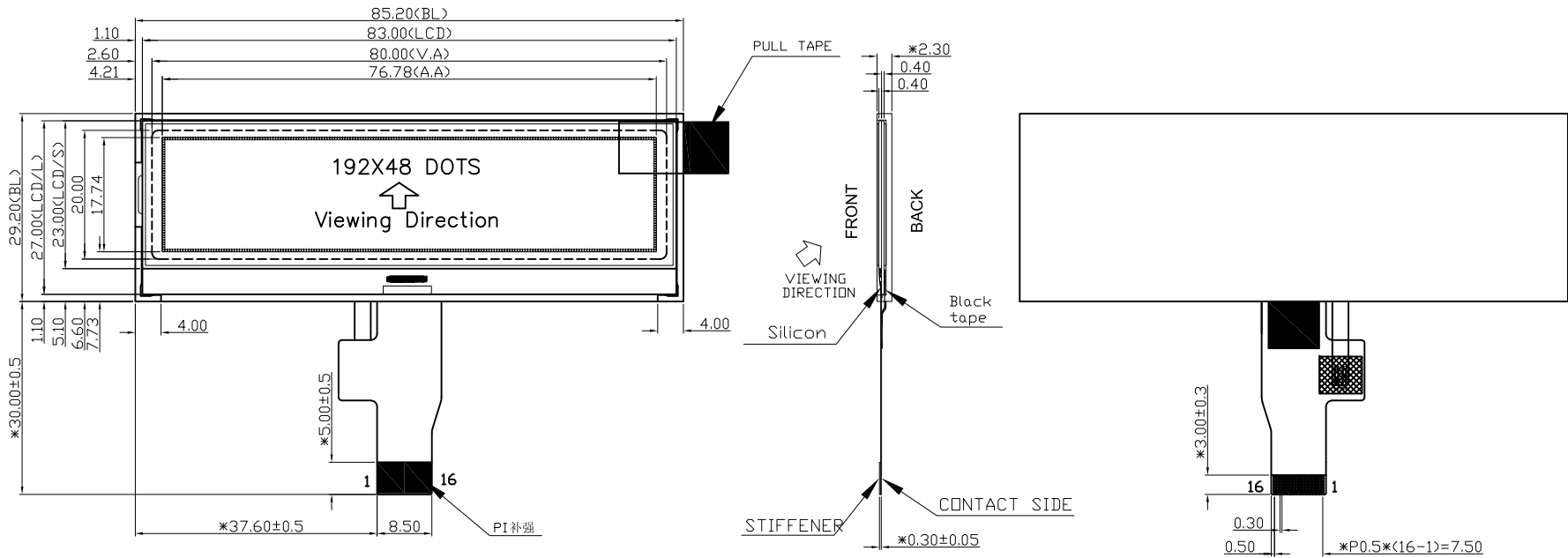


PIN ASSIGNMENT

No	Symbol
1	TG_IN_1
2	TG_OUT_1
3	LED_A
4	LED_K
5	VG
6	XV0
7	V0
8	VDD
9	VSS
10	CSB
11	A0
12	RSTB
13	SCL
14	SDA
15	TG_IN_2
16	TG_OUT_2



Display Type	FSTN
	POSITIVE
	TRANSMISSIVE
Front Polarizer	
Operating Method	1/49 DUTY, 1/8 BIAS
Viewing Angle	6 O'CLOCK
LCD Driver IC	ST7525
Operating Voltage	Vop=9.0V
Driver Voltage	VDD=3.3V
Operation Temperature	-10°C TO 60°C
Storage Temperature	-20°C TO 70°C
Interface	SERIAL, 4-SPI
Backlight	WHITE(F=60-120mA, VF=3.3)

- NOTE:
1. GENERAL TOLERANCE: ±0.20.
 2. (...) IS REFERENCE DIMENSION.
 3. * CRITICAL DIMENSION
 4. RoHS COMPLIANT

VER.	SYMBOL	AMENDMENT	SIGN	DATE	CUSTOMER'S APPROVAL	DRAWN	WKL	TITLE	DRAWING NO.						
01		First Issue	WKL	16.02.18		EE.CHECKED	LJY	MODULE SPEC.	STR-TG9579						
						ME.CHECKED	LJY		UNIT	mm	SCALE	FIT			
						APPROVED	HJB		3rd Angle	⊕	SHEET 1 OF 1				
						BOM NO.: BM160106-04A						TRUEVISION TECHNOLOGIES LTD			